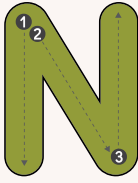


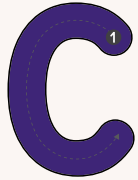
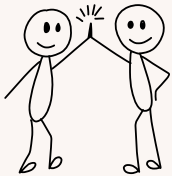
## Intentionally Equitable

Prioritising the needs and wants of the most marginalised students



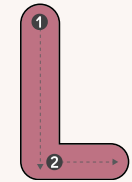
## Nurturing

Developing positive and caring relationships with students to support inclusion and well-being



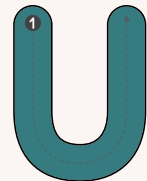
## Co-Created

Working collaboratively with students to design effective and values-based curriculum



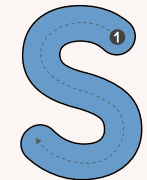
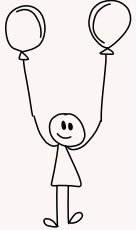
## Liberating

Redefine the roles of 'teacher' and 'student' to renovate traditional power dynamics within the classroom



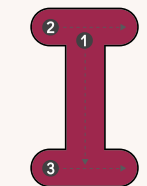
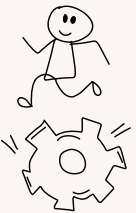
## User-Friendly

Design accessible and engaging learning resources, considering the full range of human diversity and complexity



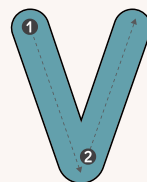
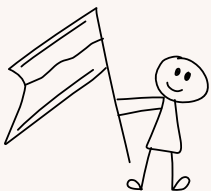
## Socially Responsible

Build relationships; act sustainably; resolve Conflict; value diversity



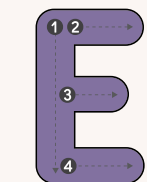
## Intergrative

Make clear connections and engage in meaningful curriculum activities that connect to real life



## Values Based

Create organic and holistic learning opportunities to develop a positive sense of self-worth



## Ecological

Incorporate UN Sustainability Goals into everything you do.

 **Be Inclusive**

Virma Rossi's 'Values - the Roots of Inclusive Praxis'

Based on <https://www.qaa.ac.uk/en/news-events/blog/root-to-shoots-a-holistic-route-to-designing-high-quality-inclusive-learning-environments#>

